

e•le•ment
an essential or characteristic part of something.

This element uses the existing asset of the pedestrian bridge to engage Franklin High School students and community members in cultivating companion vegetables and herbs. Using the repeating planter module, the bridge can become a public balcony garden for the Mount Baker Transit Center. This site is visible to both pedestrian and motorized traffic - repurposing it for urban agriculture will establish the activity as an identifying characteristic of the community.



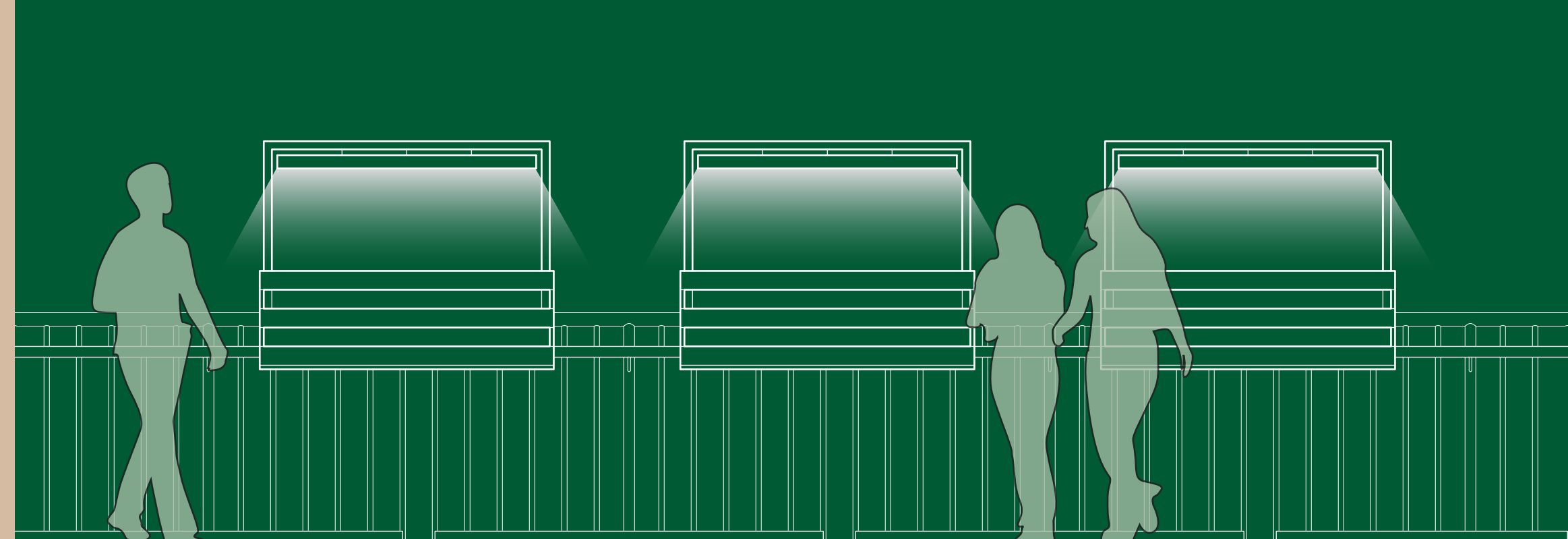
- precedents**
1. flower bridge, trondheim
 2. balcony garden, brooklyn
 3. high school gardening, new jersey



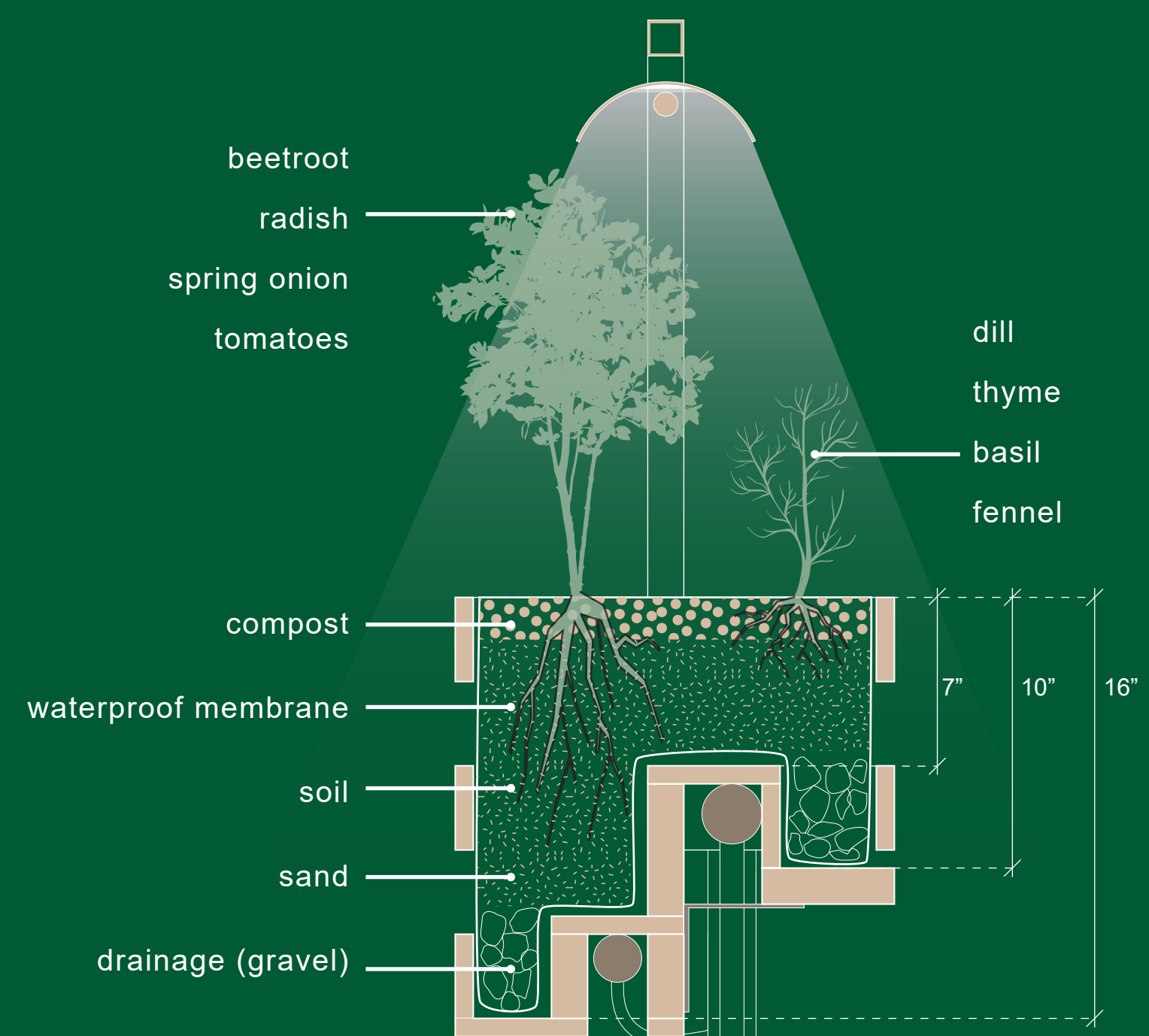
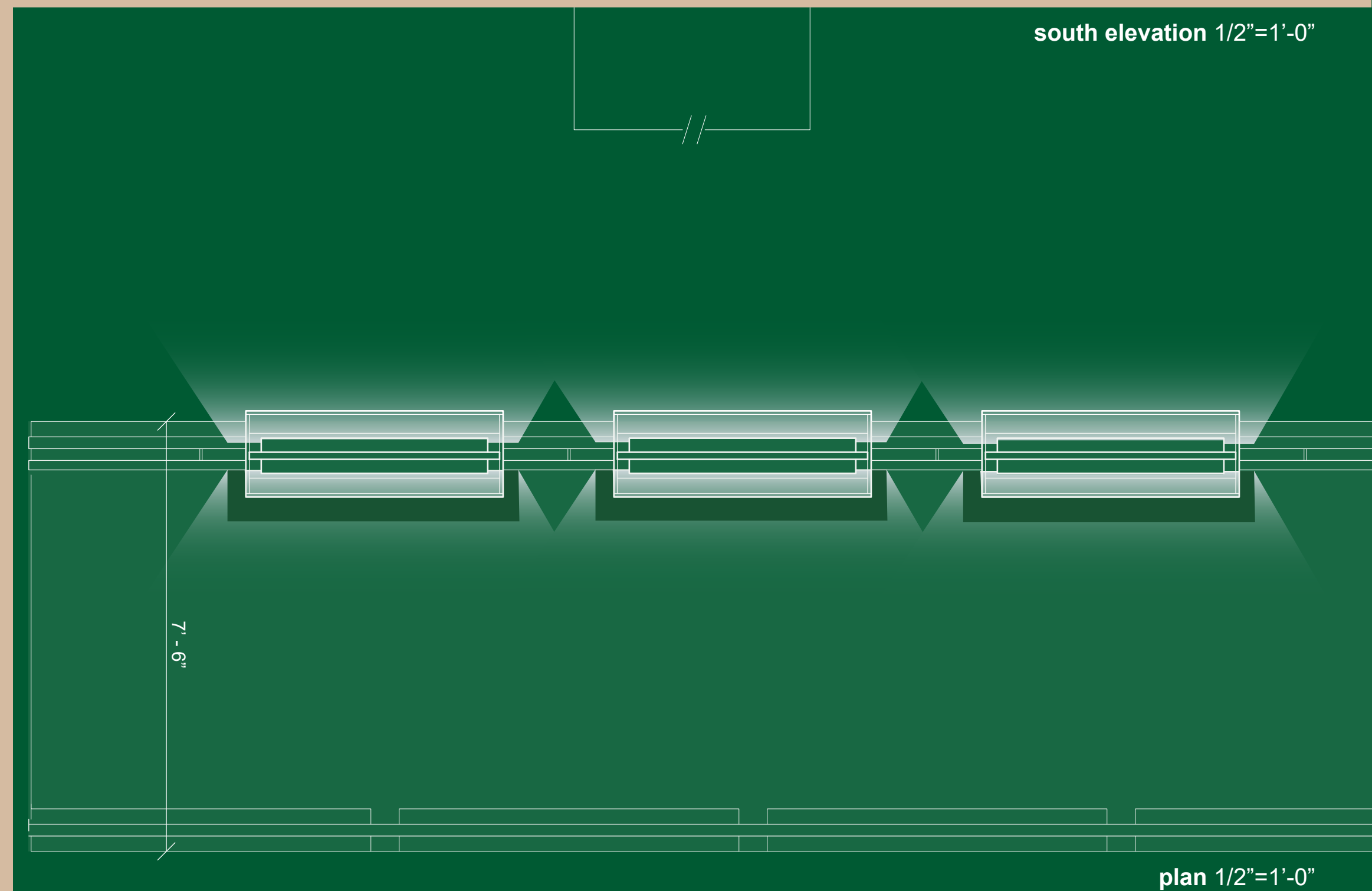
private experience



public exposure



south elevation 1/2"=1'-0"



section 2"=1'-0"