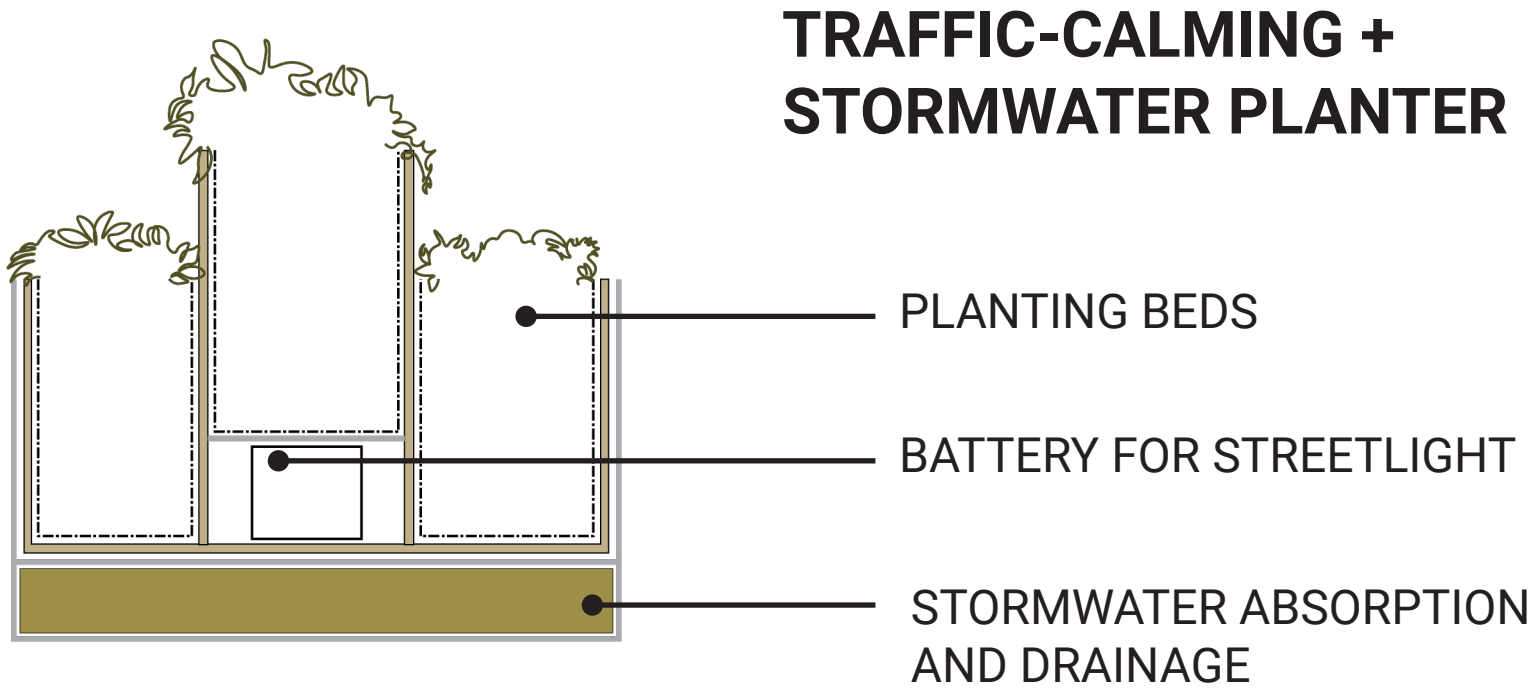
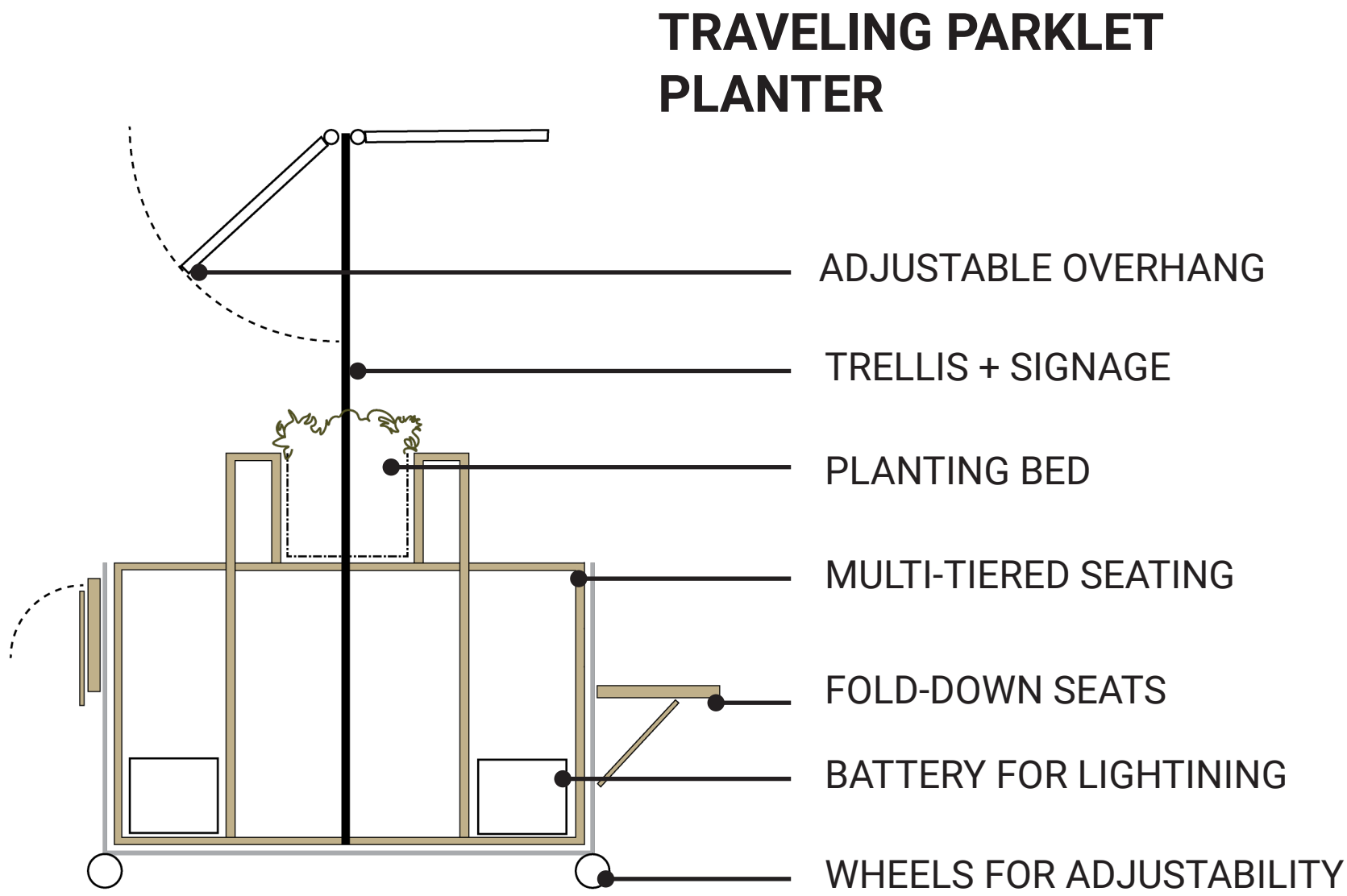


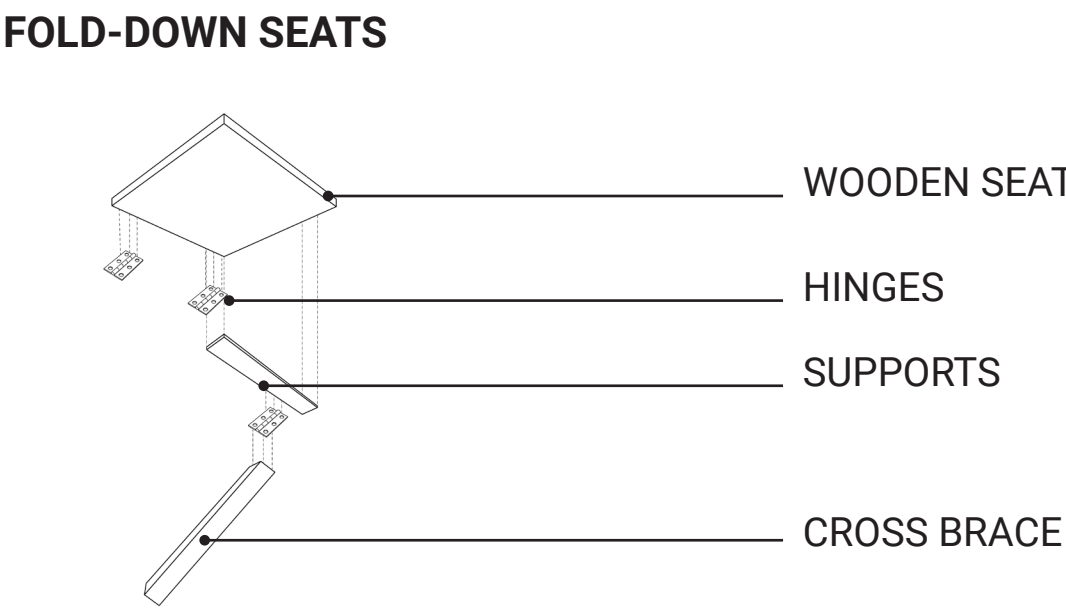
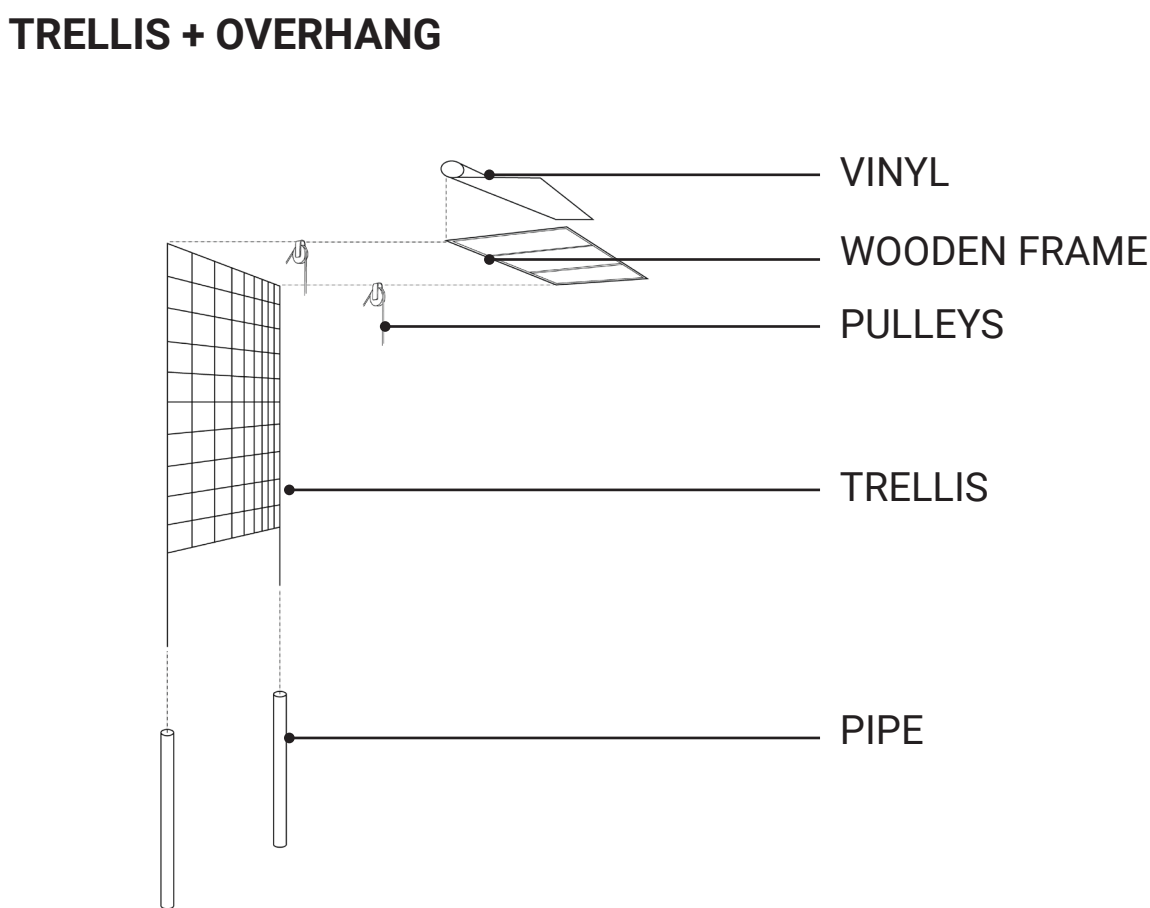
POP-UP PLANTERS FOR NEIGHBORHOOD RESILIENCE

Mt. Baker Station Area : Staying In Place : BE Studio W18 : Julia Brasch & Rachel Wells

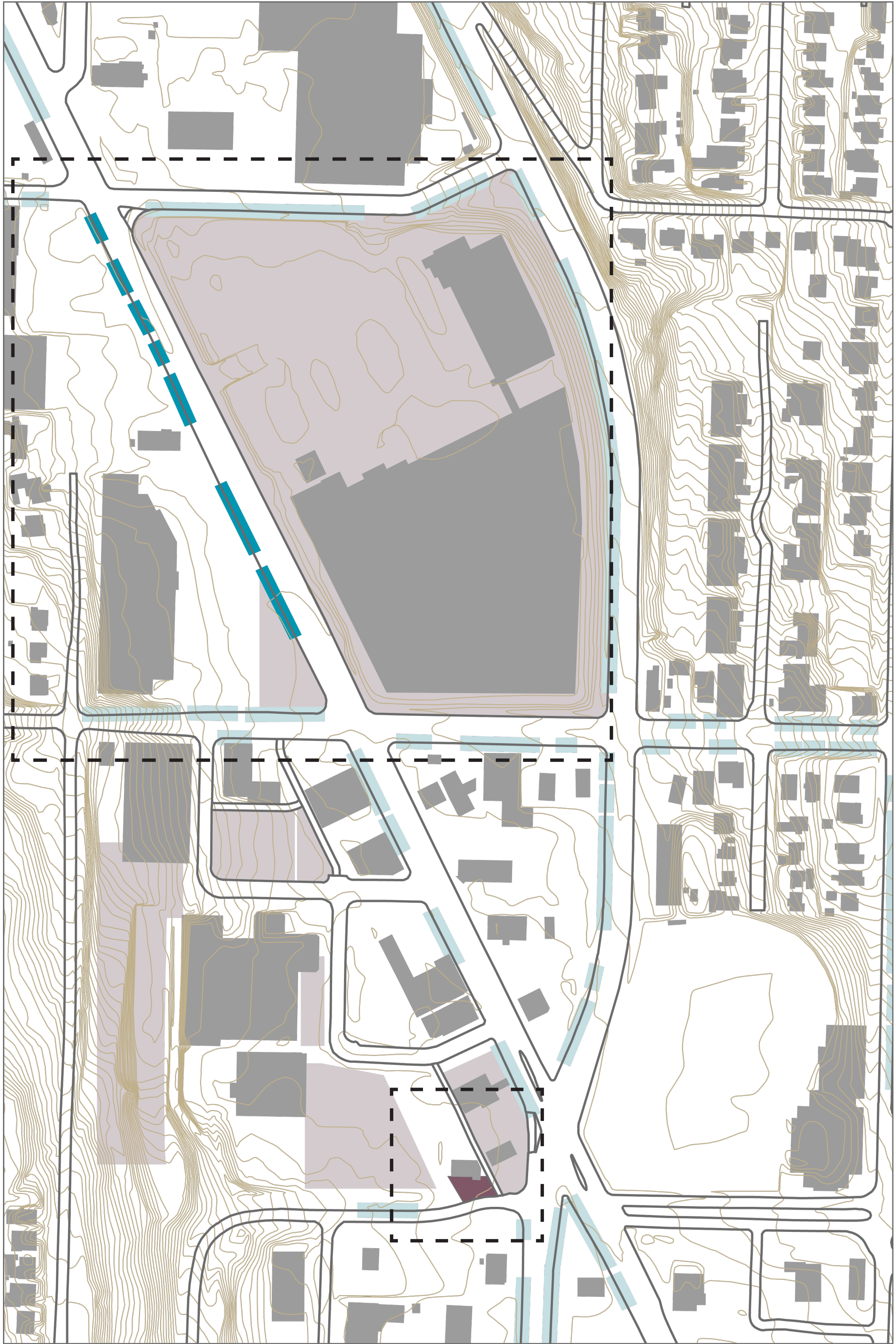
- Modular, mobile planter boxes of two types: traffic calming and gathering
- Objective: creating the opportunity for small, flexible gathering and buffering areas using adjustable, movable planter boxes to draw attention to underutilized spaces and enabling and inviting people to linger
- Traveling parklet planter offers choice of seating levels and shelter
- Planter location changes often to pique interest and draw attention to specific locations
- User feedback on planter location is encouraged through digital token voting and comments
- Done in collaboration with local businesses and residents



PARTS ASSEMBLY



CONTEXT: MT. BAKER STATION AREA



0' 75' 150' 300' 600'



INTERVENTION AREA
INTERVENTION AREA
POTENTIAL FOR TRAFFIC CALMING

INITIAL SITES
UNDERUTILIZED PARKING AREAS

PRECEDENTS



<http://popupcity.net/steal-this-forest/>



<http://thisbigcity.net/pop-up-planning-new-methods-for-transforming-the-public-process/>



<http://peoplest.lacity.org/about/>

Steal this Forest!

Address Neptunplatz EV
(citizen initiative)

Temporary outdoor furniture, lighting, and planting areas were installed, **inviting citizens to participate in moving trees** around the plaza

Pop-Up MANGO

City of Santa Monica and Melendrez urban designers

Showcased temporary installations of possible improvements for a new Greenway corridor including **traffic-calming devices, curb extensions, mini-parks, etc.**

Gave citizens the opportunity to see and give feedback on public realm improvements

LA People Streets

City of Los Angeles Dept. of Transportation

Eligible community partners can apply for approval to create **plazas and parklets** in city streets

MATERIALS

BASIC MATERIALS



Wood



Metal Structure



Soil + Plants



Landscape Fabric

SPECIALIZED MATERIALS



Pipe: PVC or similar



Mineral Wool
(for stormwater)



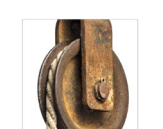
Solar Light



Hinges



Vinyl



Pulleys



Trellis: remesh
or wood



Wheels



Batteries

COST ESTIMATES

MATERIALS:

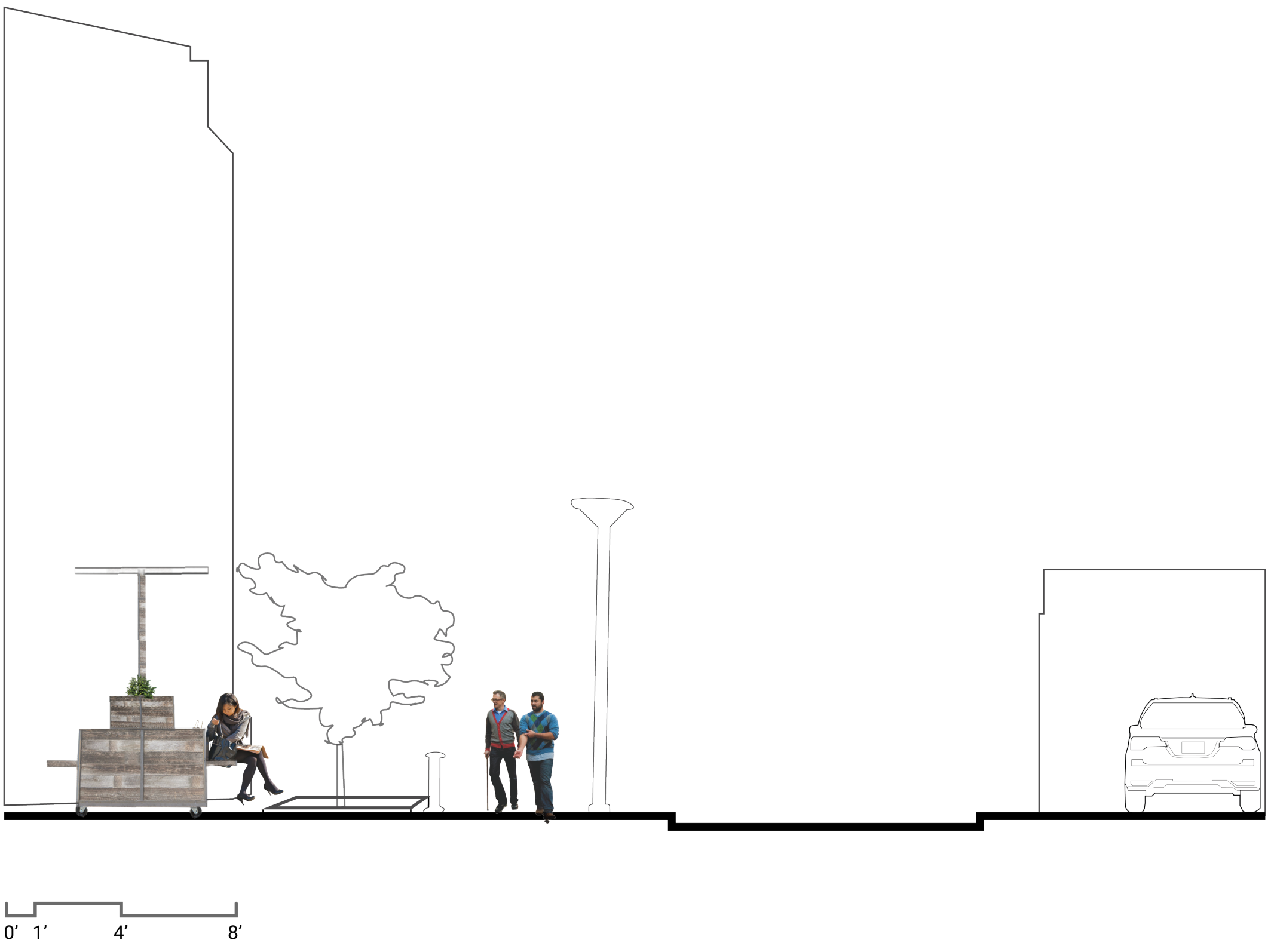
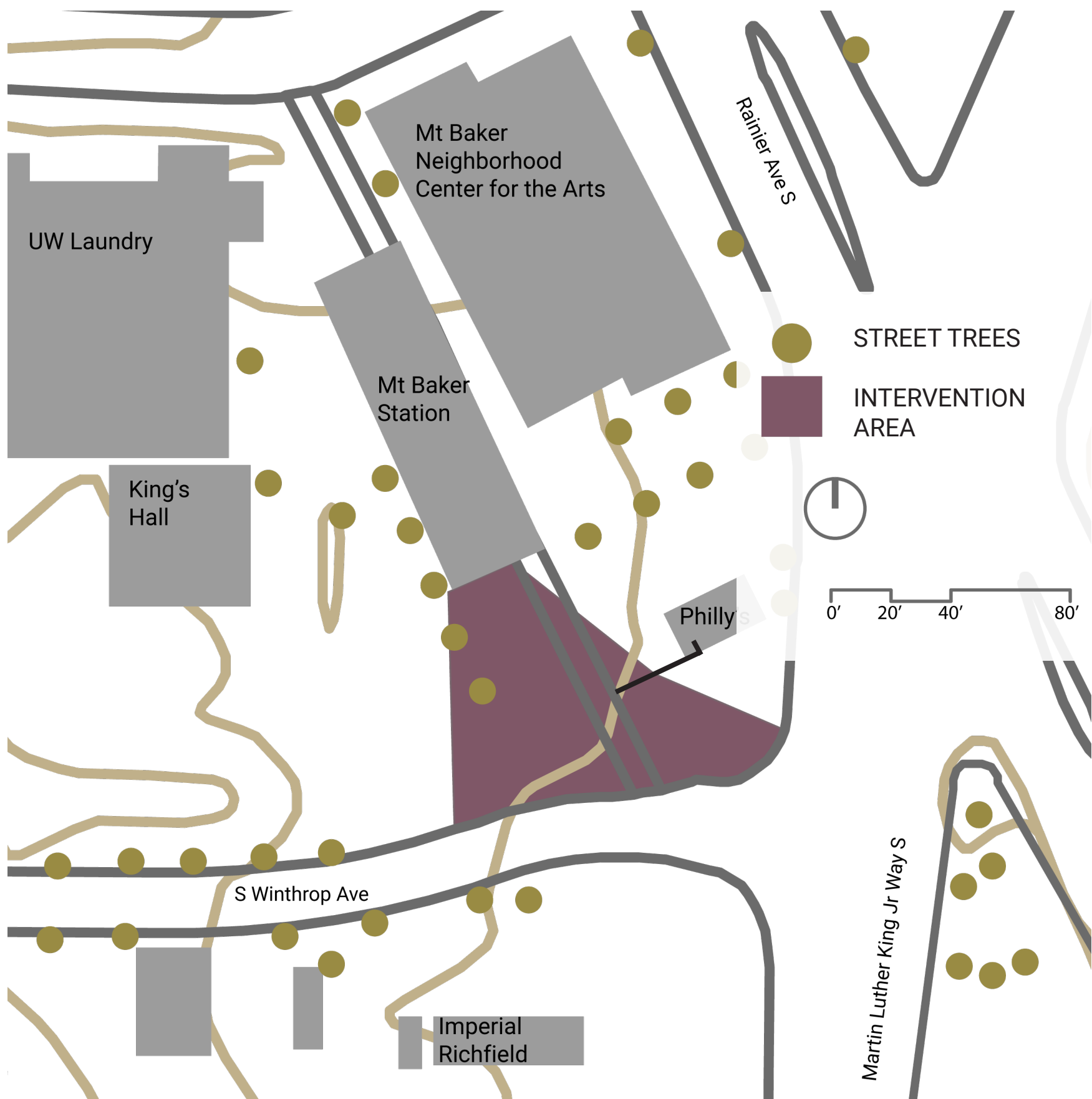
| | |
|-------------------|--------------------------|
| Wood: | \$150 - 300 or reclaimed |
| Batteries: | \$ 50 |
| Metal Structure: | \$ 150 or reclaimed |
| Soil + Plants: | \$ 15 - 200 |
| Mineral Wool: | \$ 45 |
| Landscape Fabric: | \$ 15 |
| Pipe: | \$ 5 or reclaimed |
| Light: | \$ 150 |
| Hinges: | \$ 20 or reclaimed |
| Pulleys: | \$ 5 |
| Trellis: | \$ 10 - 30 or reclaimed |
| Wheels: | \$ 20 |

OTHER NEEDS:

- PARKLET PERMITTING:
- 3 letters of community support
 - Photos of area
 - Site plan
 - Proof of contact with local business
 - Fees est.: ~ \$1500
 - Partner with onebusaway or soundtransit to create feedback app

TOTAL EST. COST: ~ \$1,600 - \$2,500

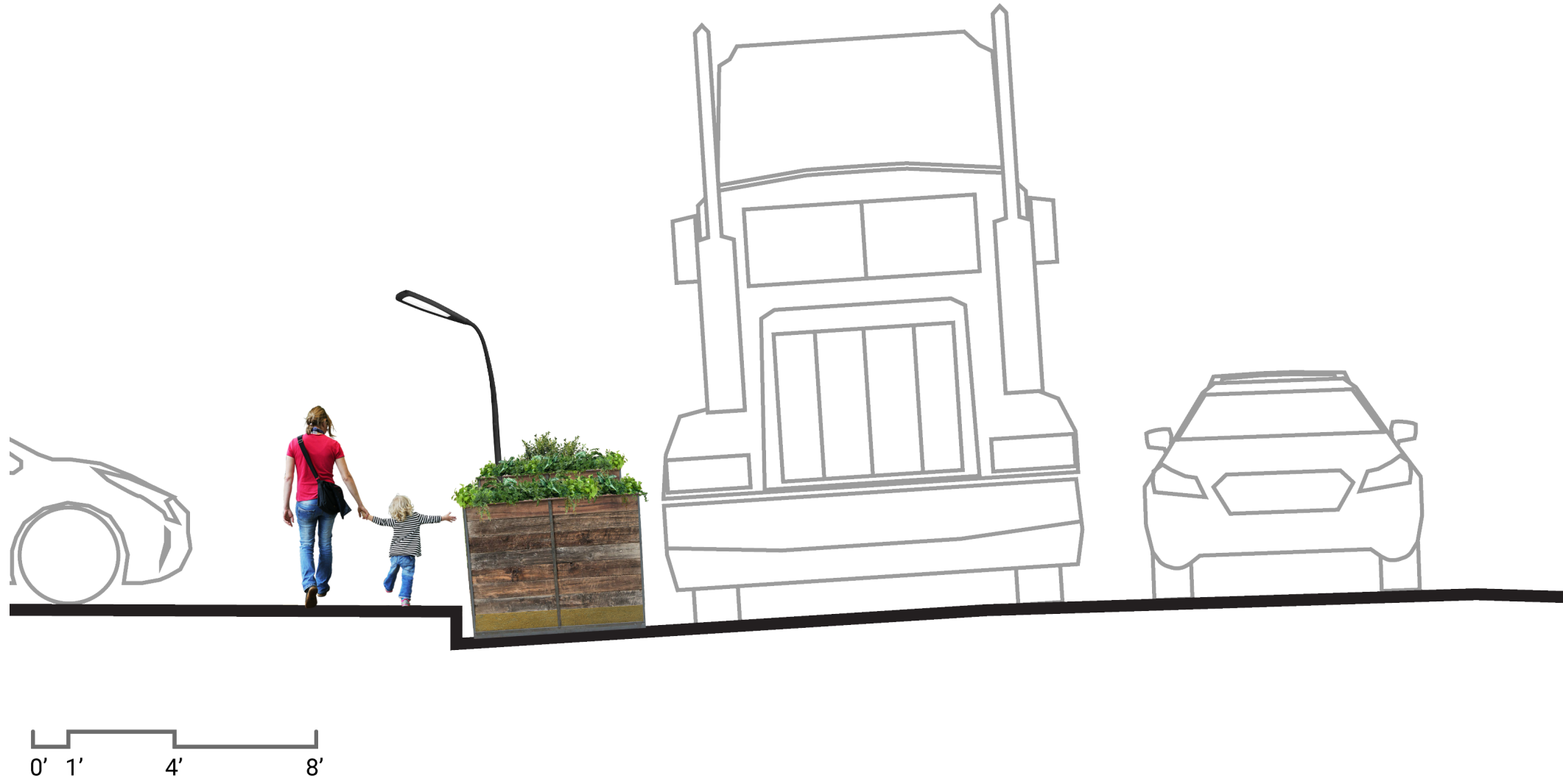
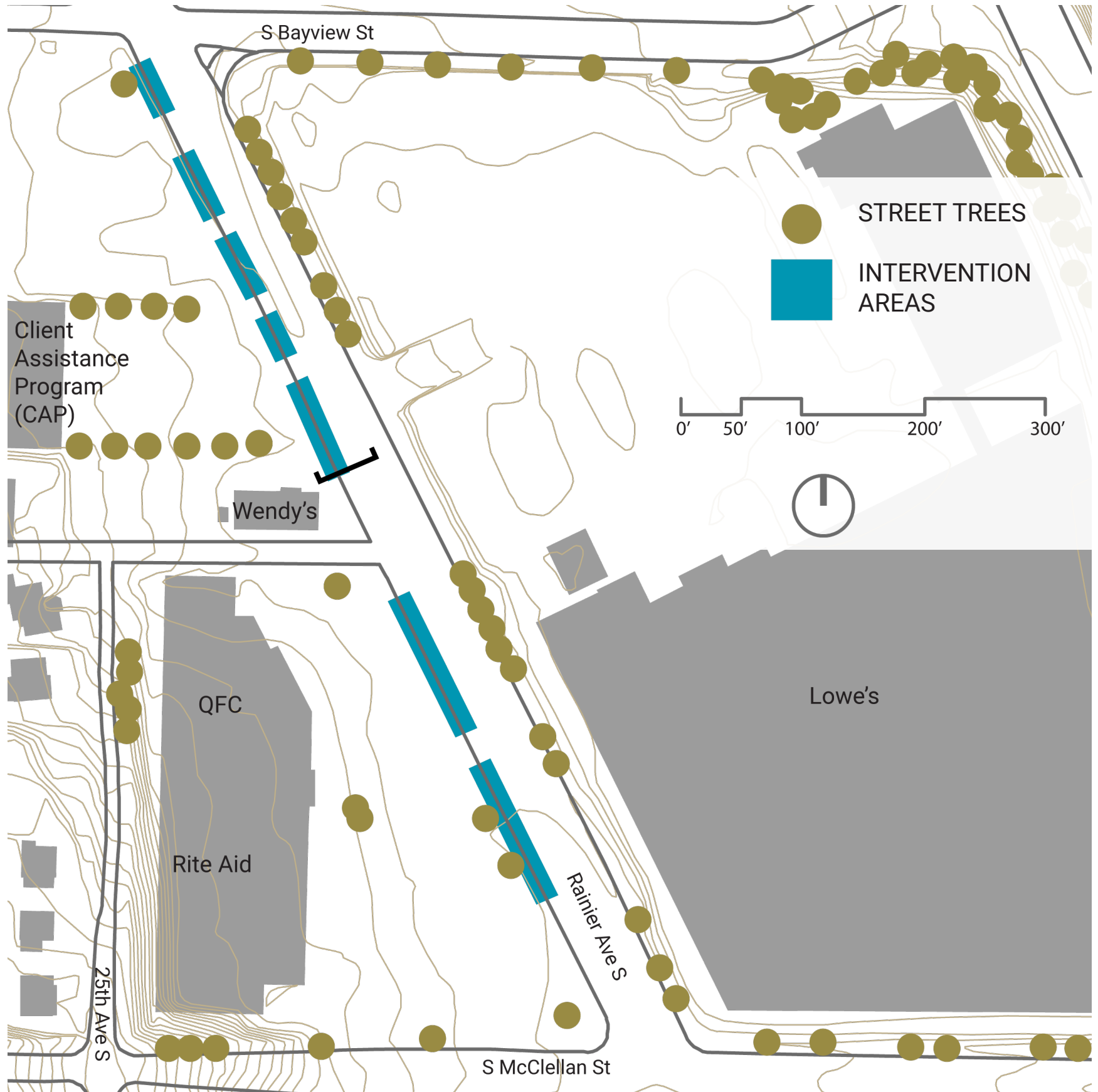
INITIAL SITES AND VICINITY



View from S Winthrop St. Facing Northwest



Pop-up Traveling Parklets by Mt. Baker Transit Station



Rainier Ave S Facing Northwest

Pop-up Traffic Calming Along Rainier Avenue

