

WATERING TREE

Mt. Baker Station Area
: Staying In Place : BE Studio Winter 2018

MULTI-FUNCTIONAL BENCH
- WATER FILTRATION, WATERING, AND SEATING

PLACE BETWEEN THE STREET TREES
- CAN BE PLACED WHERE NEED A BENCH

WATERING TREE DURING THE DRY SEASON

STRUCTURE OFFERS SHELTER FOR PEDESTRIAN

PRECEDENTS



Tasinge Plads
By GHB, Kobenhavns Kommune
at Kobenhavn, Denmark

At first glance, it seems like a typical park space where children can play, young adults can relax, and elderly can sit and chat, but towering above are sculptures shaped like upside-down umbrellas. During heavy rains, the flowerbeds fill with water and wait no drain until the storm water runoff subsides.



MATERIALS

WATERING TREE BENCH



PIPE: STEEL



WOOD



LED LIGHT



HINGES



PLASTIC PIPE



WATER STORAGE
WOODEN DRUM

PLANTING

ON THE GREEN ROOF



SEDUMS



STONECROP



VINCA



CAREX FLACCA

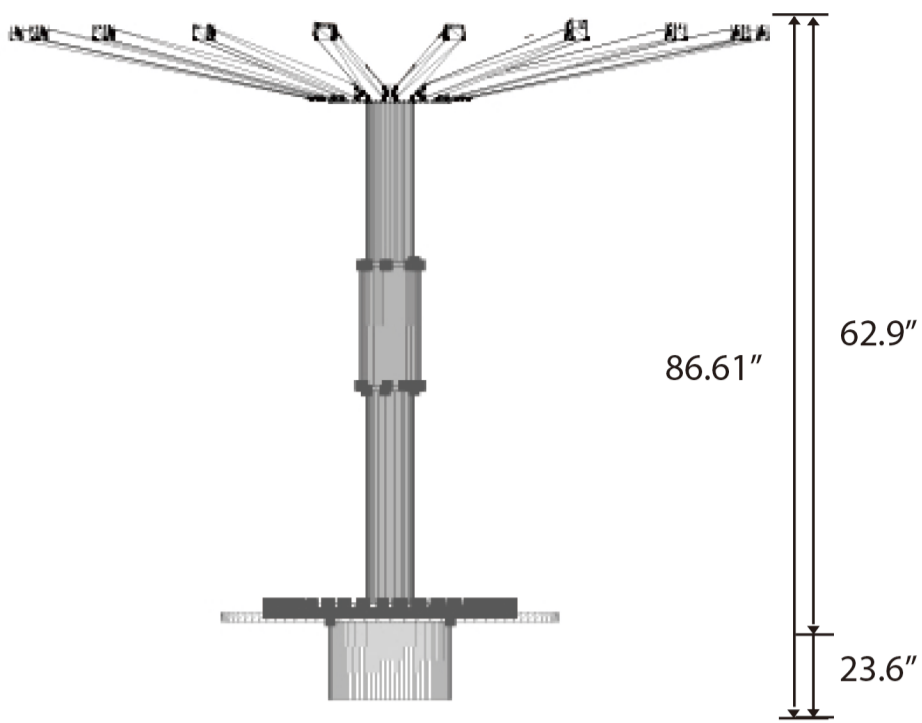


ALLUM CERNUUM

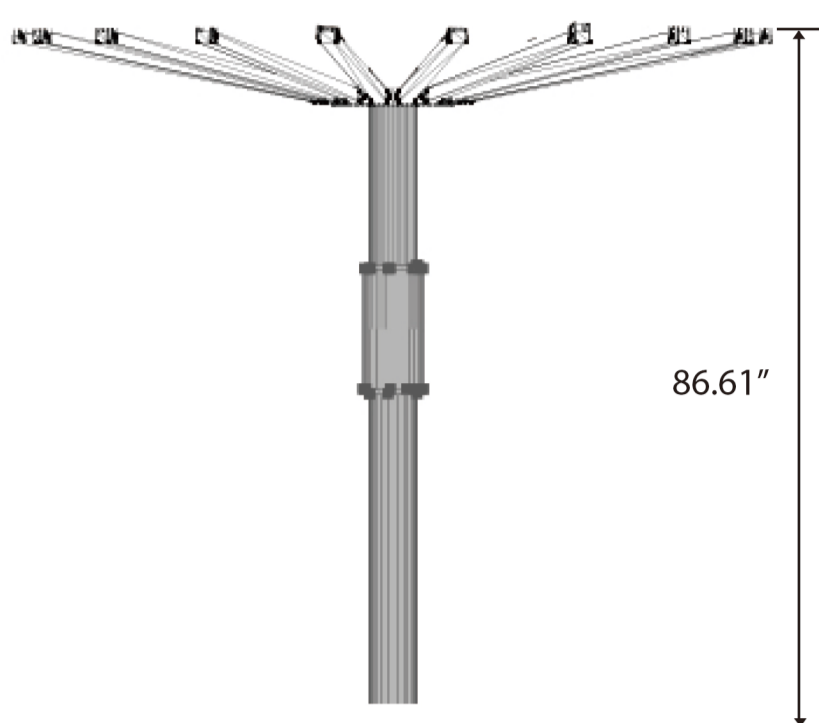


DELPSPERMA COOPERI

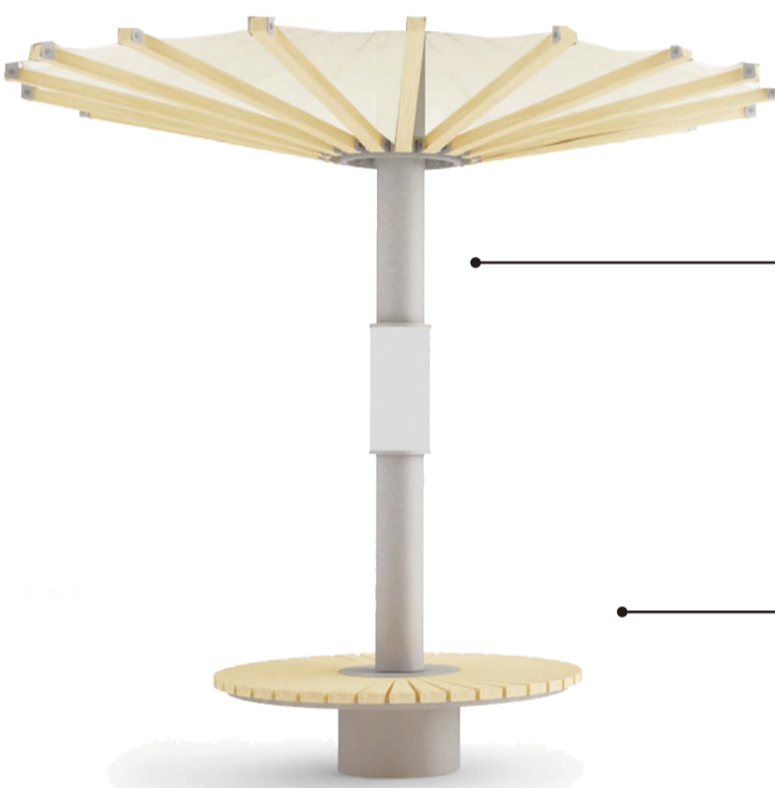
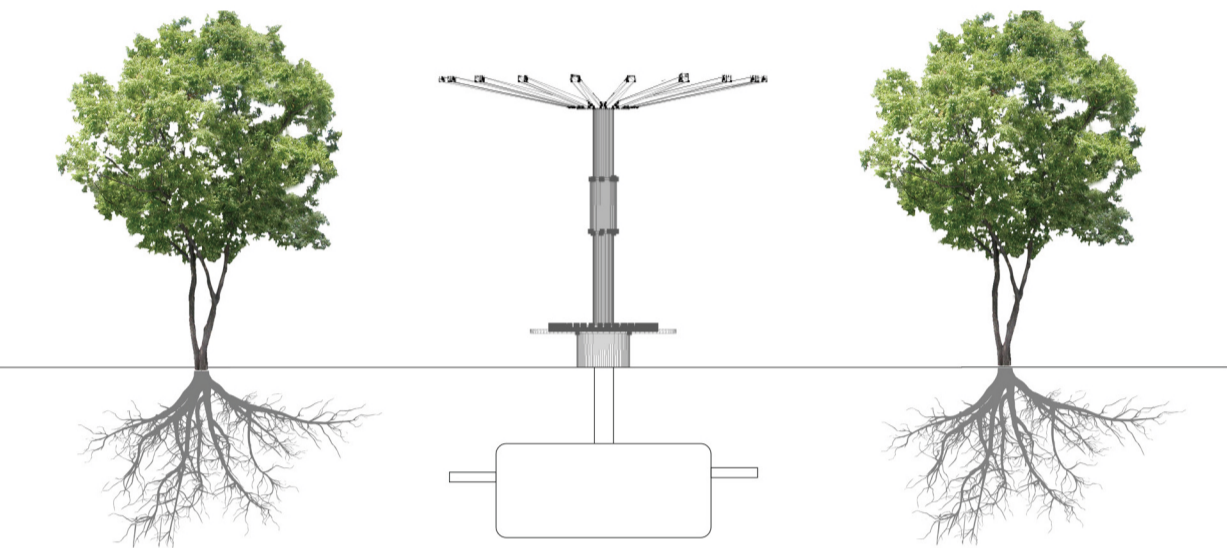
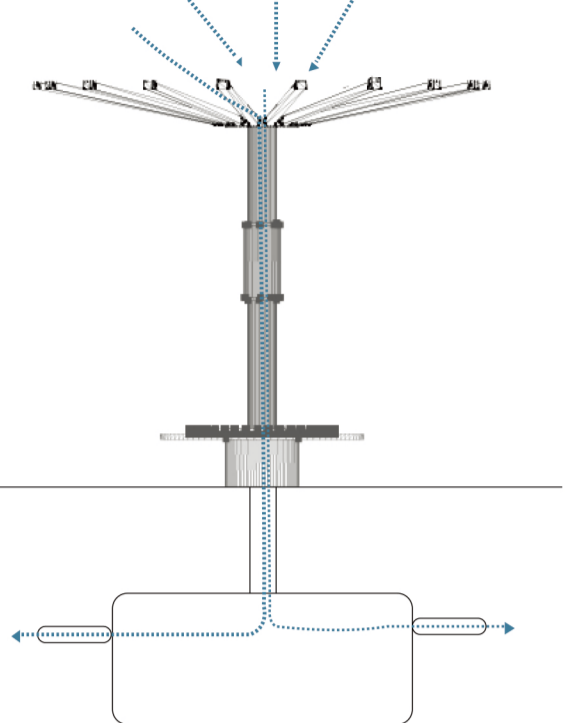
1: WATERING TREE BENCH



2: WATERING TREE



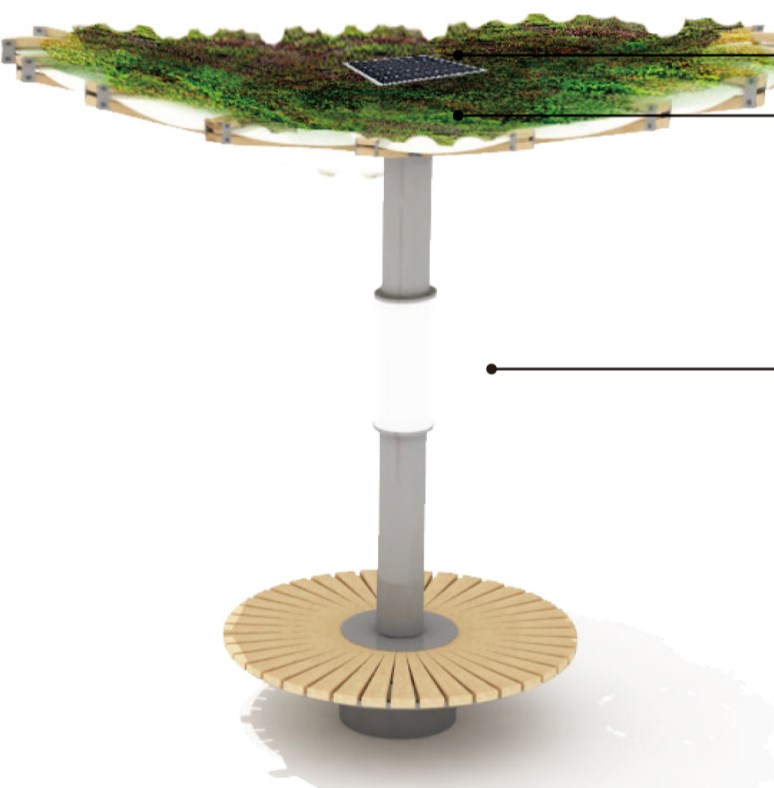
WATER FLOW



GREEN ROOF

WATER FLOW PIPE

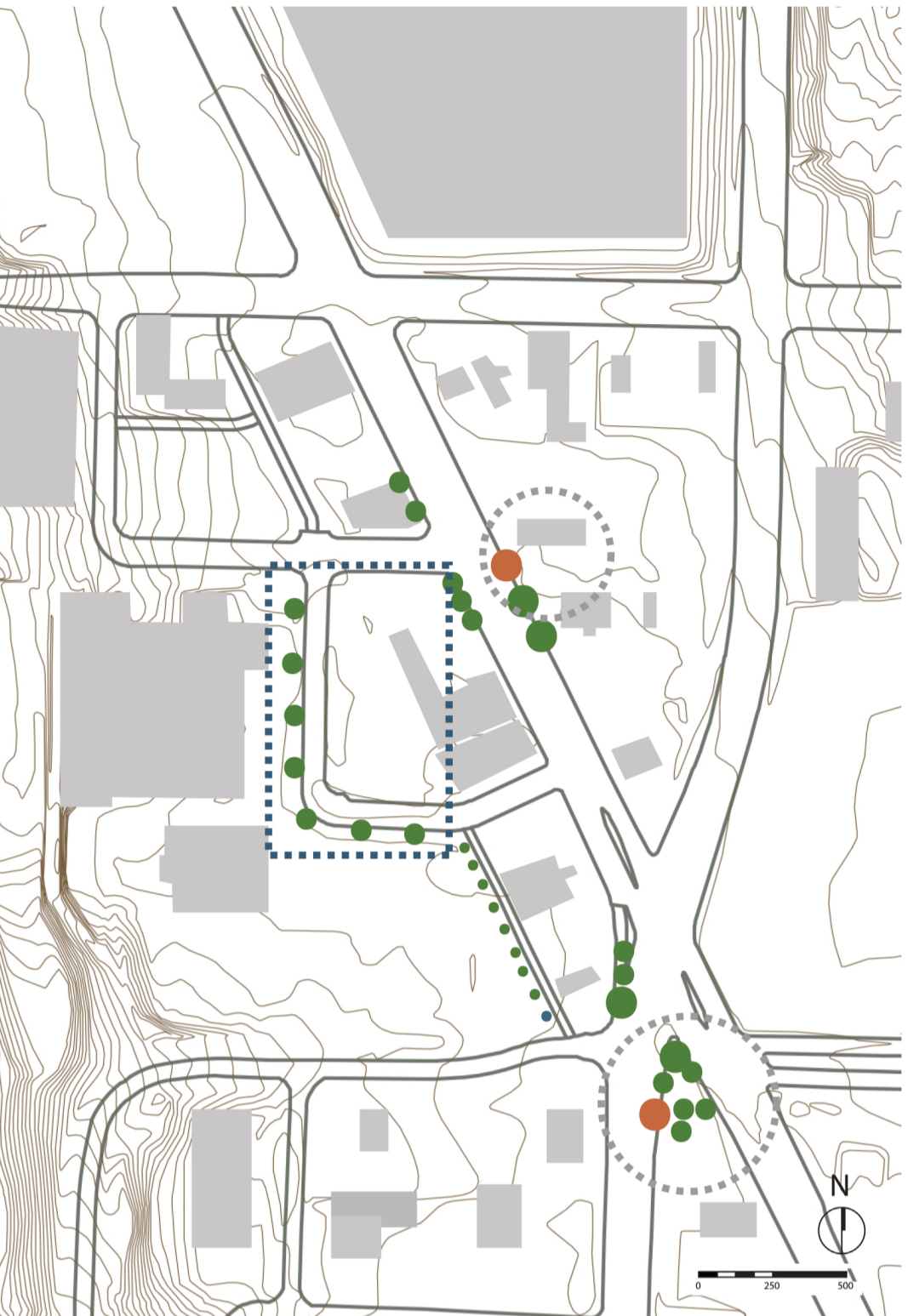
SEATING



SOLAR PANEL
DRAINAGE SYSTEM

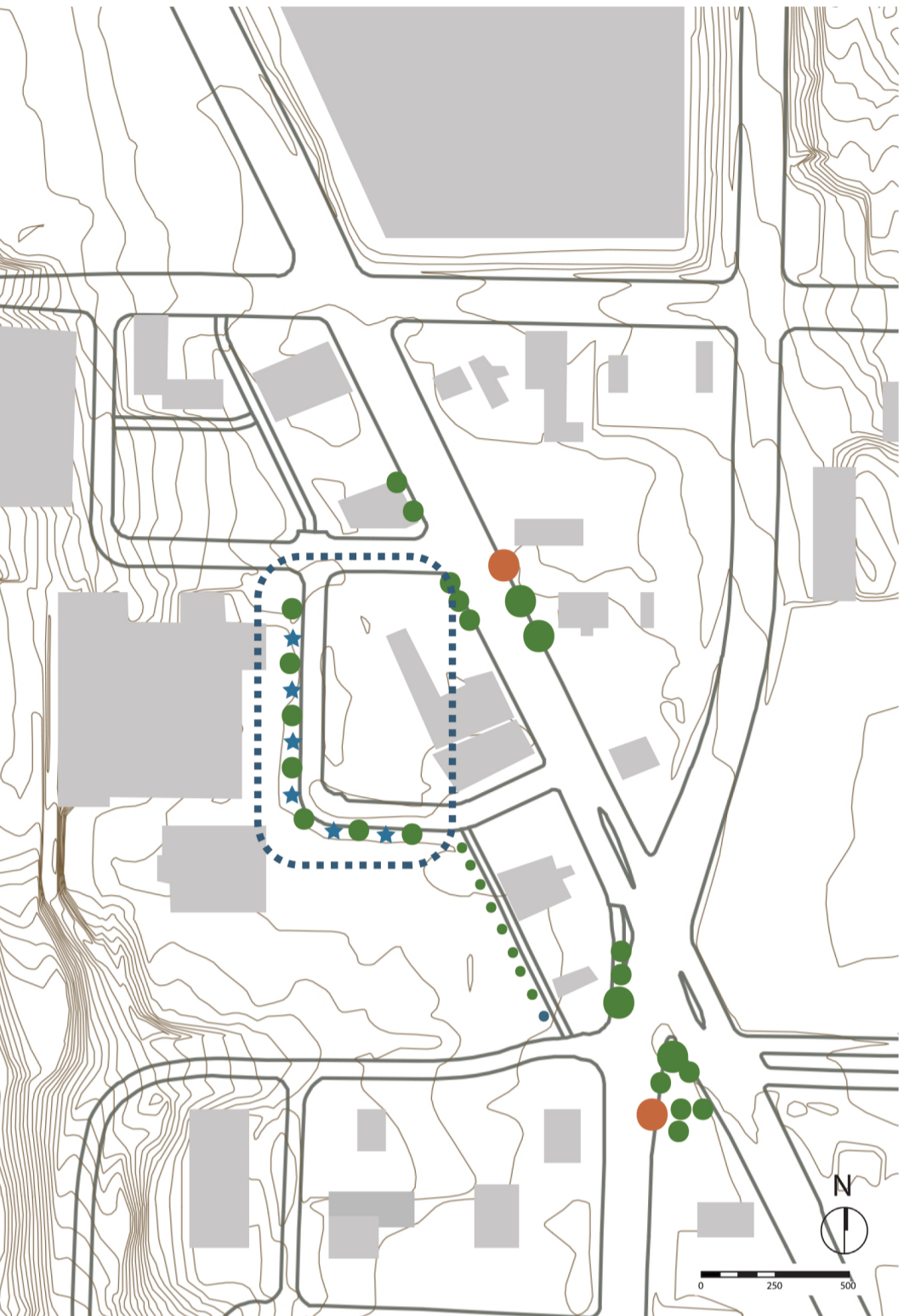
LIGHTING SYSTEM

CONTEXT MAP



- EXISTING STREET TREES
- BUS STOP
- SITE
- WATERING TREE POTENTIAL AREA

PLAN



- EXISTING STREET TREES
- BUS STOP
- WATERING TREE
- SITE

COST ESTIMATES

STEEL PIPE:	
WOOD:	\$ 100 - 300
LED LIGHT:	\$ 50 - 100
HINGES:	\$ 20
PLASTIC PIPE:	\$ 50 - 100
SOIL + PLANTS:	\$ 15 - 200
MINERAL WOOL:	\$ 45
LANDSCAPE FABRIC:	\$ 15
PIPE:	\$ 30
LIGHT:	\$ 150
WATER STORAGE:	\$ depends on the size
PLANTS:	\$ 300 ~
SOLAR PANEL:	\$ 185 - 200

TOTAL: About \$ ~1160

