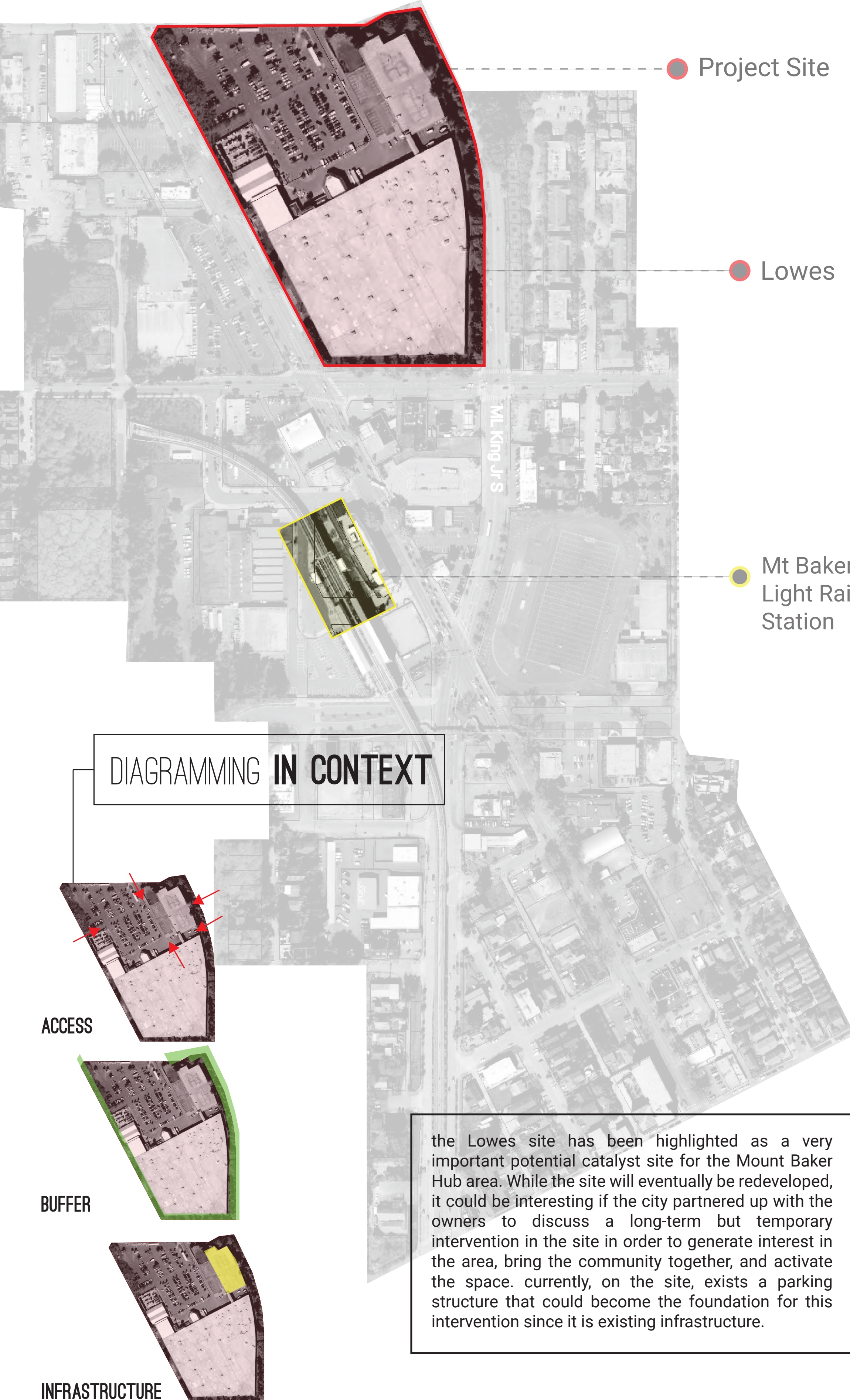


THE INSTALLATION

BE 606. ELEMENTS PROJECT. LEE ANN RYAN



DIAGRAMMING IN CONTEXT

the Lowes site has been highlighted as a very important potential catalyst site for the Mount Baker Hub area. While the site will eventually be redeveloped, it could be interesting if the city partnered up with the owners to discuss a long-term but temporary intervention in the site in order to generate interest in the area, bring the community together, and activate the space. currently, on the site, exists a parking structure that could become the foundation for this intervention since it is existing infrastructure.

THE PRECEDENTS

MARKET ON CARLSPLATZ

düsseldorf, germany



Market on Carlsplatz is a small square in the city center that houses a farmer's market, temporary, and permanent eateries. Additionally, the square is surrounded by restaurants and shops, creating a destination that is popular during all hours of the day.

COPENHAGEN STREET FOOD

copenhagen, denmark

Copenhagen Street Food was a long-term but temporary take over of an old paper warehouse. It was full of many different food stalls and has quite a bit of infrastructure including bathrooms, a fireplace, outdoor furniture, and a variety of different structures to eat in or on.



FAVELA PAINTING PROJECT

rio, brazil



The Favela Painting Foundation was started by two Dutch artists who believe in using art as a catalyst for social change. The project first started in Rio but can now be seen in many other countries like Curacao and the Netherlands.

GRONINGEN FARMER'S MARKET

groningen, the netherlands

The farmer's market in Groningen happens three times a week in a large plaza in the city center, called the Vismarkt. It is assembled and disassembled in the same day, making the plaza a flexible and engaged space year-round.



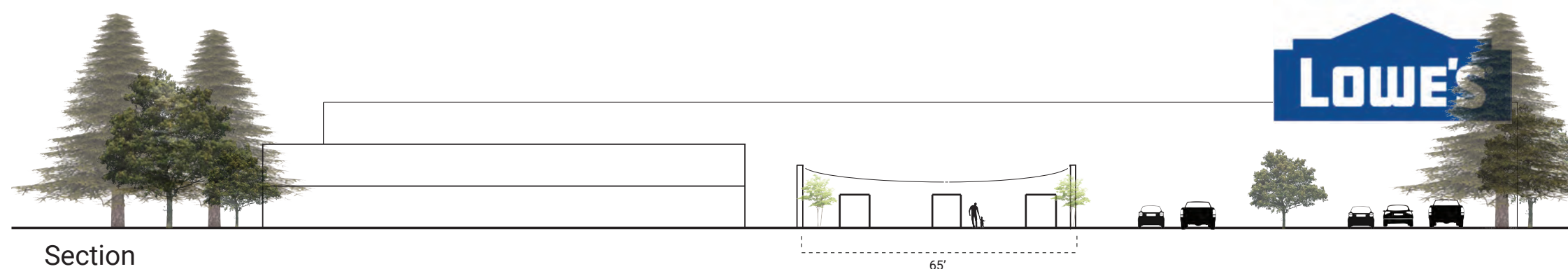
THE PROJECT



Overview



Vignette



Section

MATERIAL INSPIRATION



SHIPPING CONTAINER: \$2,000



SCAFFOLDING: \$100 FOR 5' X 5'



BARN WOOD: \$520/SQ FT

