

# NETWORKS: Repurposed Shipping Containers as Everyday and Emergency Infrastructure

Inspired by Seattle Public Schools’ current use of the shipping container for emergency supply storage, this proposal introduces a network of repurposed shipping containers to **bolster community disaster response, especially in an earthquake scenario**. Color-coded shipping containers reconfigured as bench planters point the fastest way out of the most dangerous zones and lead to emergency gathering areas on more open, stable ground. Mostly parks and schools, these locations house larger container configurations; some adaptable for events, and others for emergency supply storage. In collaboration with the Parks Department and Seattle Public Schools, **periodic communitiy dinners to rotate emergency supplies** would be hosted. These elements are also intended to serve everyday functions, such as **seating, greening, and even promoting greater connectivity between neighborhood parks**.

## Precedents

### PHS Pop-Up Garden at Philadelphia Rail Park



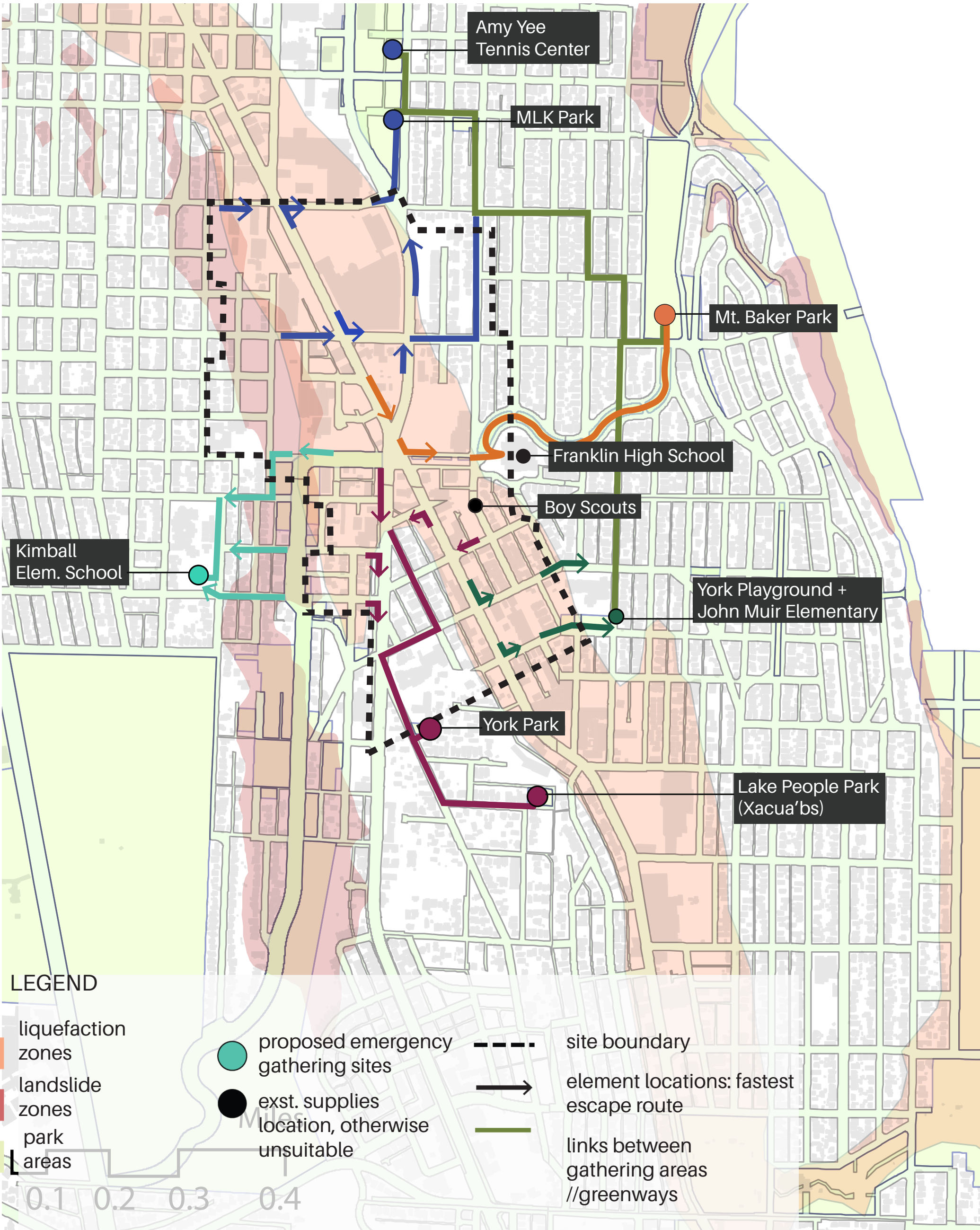
- Walter Hood designed this pop-up garden for the Viaduct Rail Park in Philadelphia utilizing old rail cars and shipping containers featuring food and drink vendors

### Yerba Buena Community Benefit District: San Francisco



- Neighborhood group created this shipping container bench as part of a streetscape improvement plan for the Yerba Buena neighborhood

# Mt. Baker Station Vicinity: Escape Routes and Emergency Gathering Areas

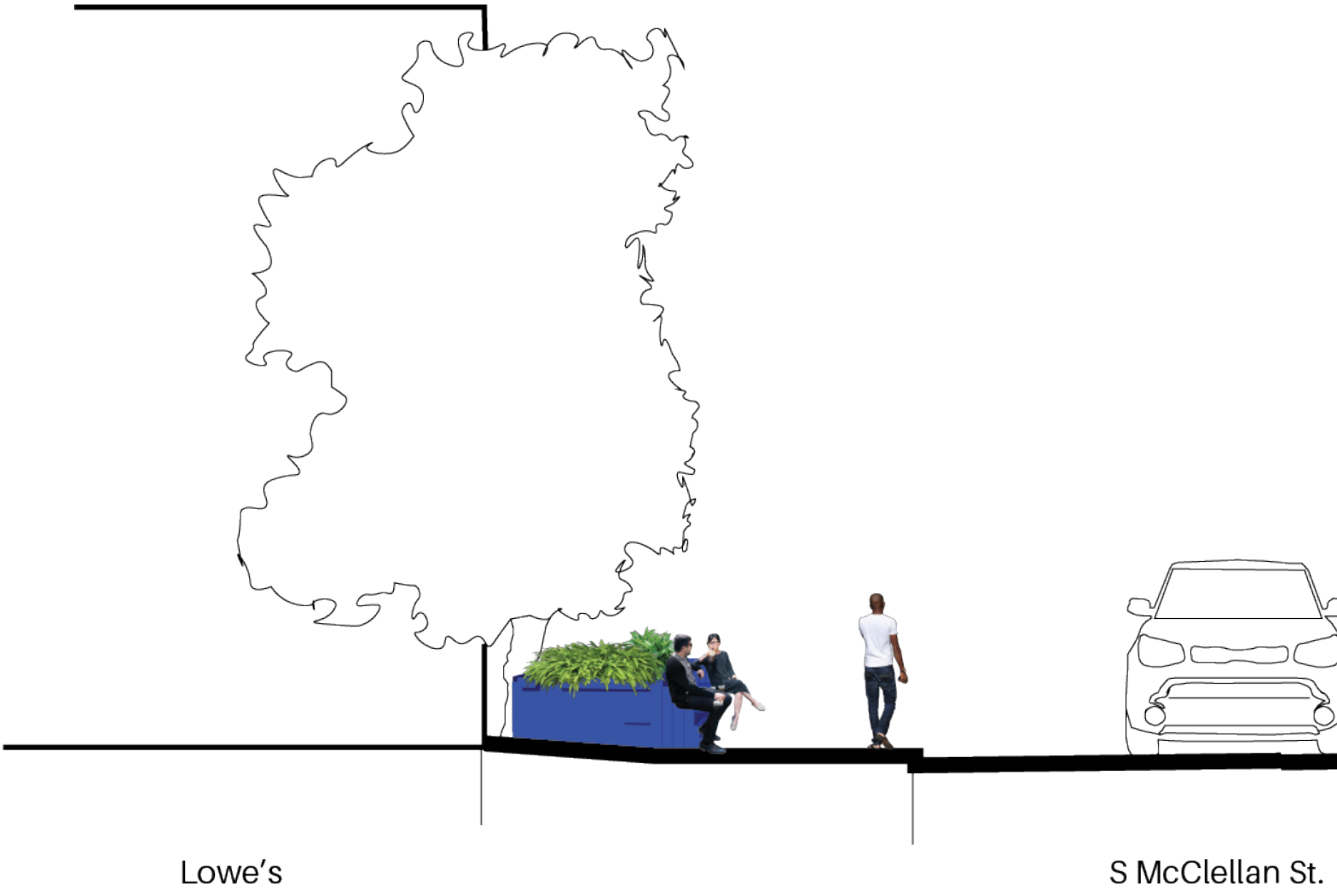
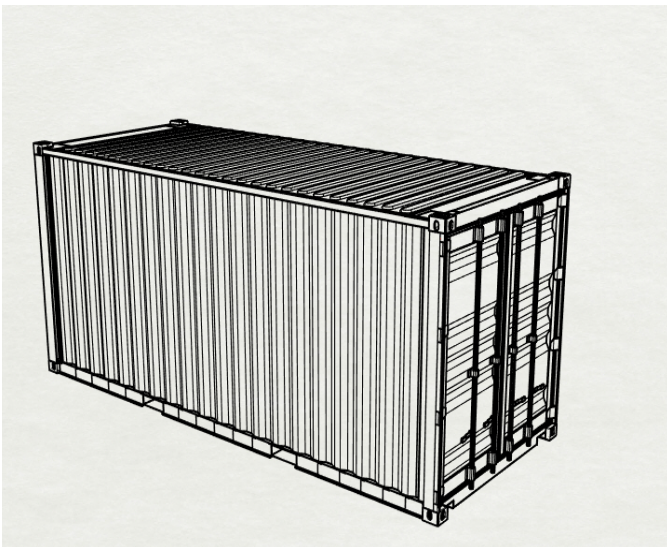
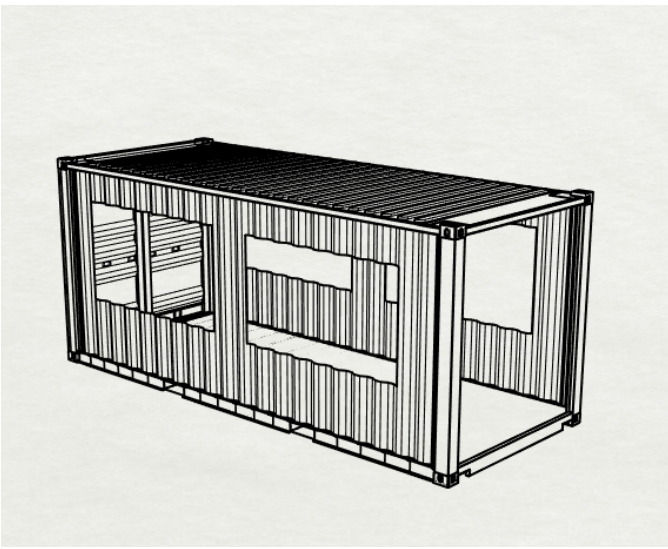
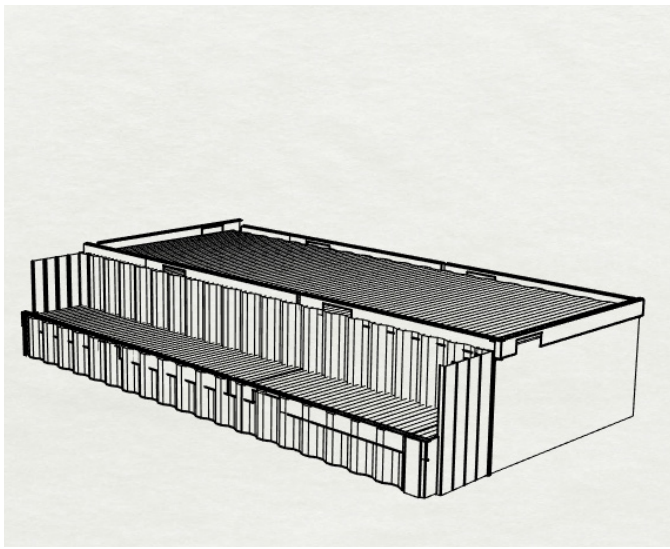


## Configurations

1: wayfinding + seating

2: pop-up for events

3: storage



S McClellan St Facing East

### Along Route out of Station Area to Mt. Baker Park

